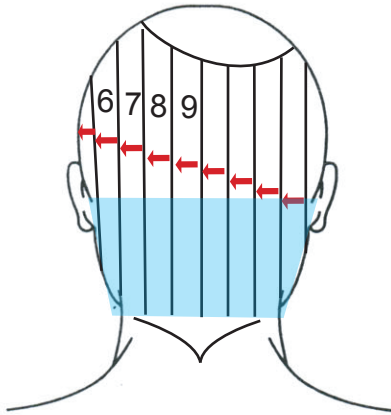
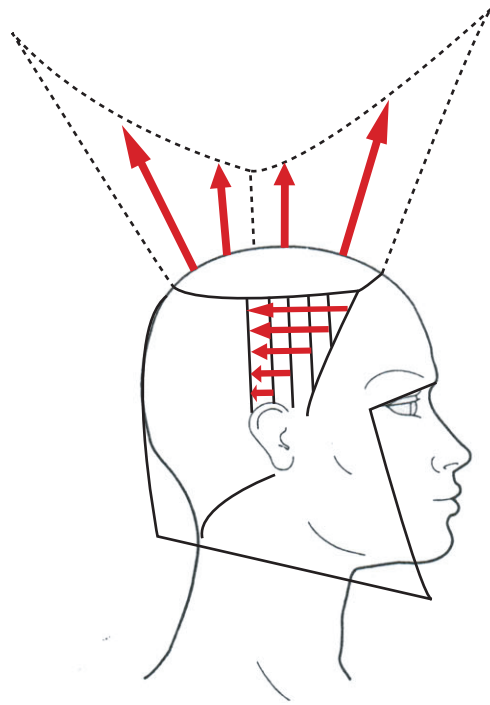


Asymmetric Bob

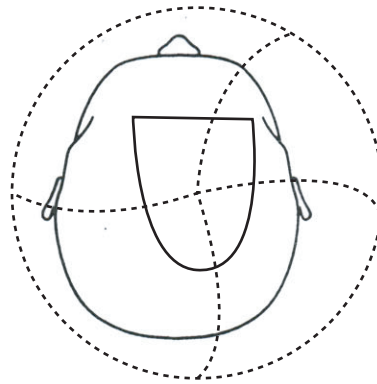
This is a basic overview watch video for details
Have fun be creative



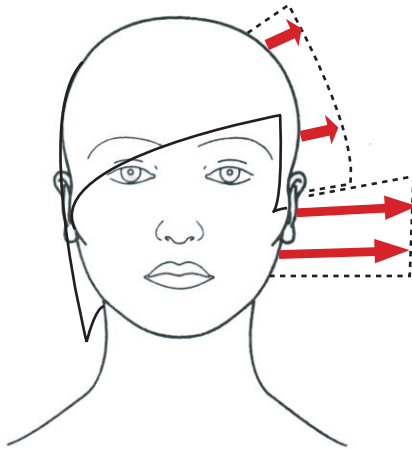
A: Previous sections from left temple area
B: Shaded blue area disconnected hair
C: Asymmetric round top section



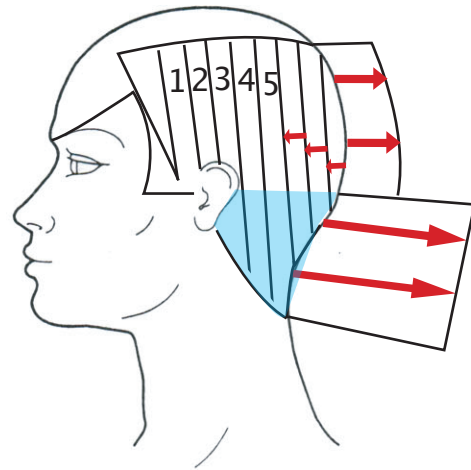
A: Temple area hair all directed behind ear
B: Pivot disconnected hair to maintain length



A: Asymmetric top section
B: Pivot disconnected hair



A: Left Side cutting view
B: Disconnected hair



A: Starting temple sections all into previous section
B: Shaded blue area disconnected
C: Back cutting view